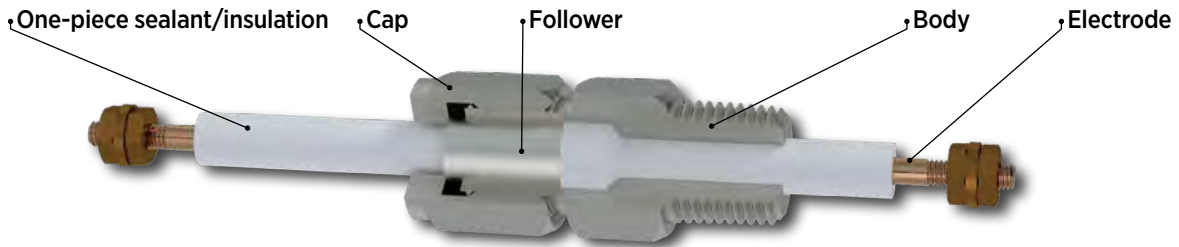


EGT Single electrode sealing to 8000VDC



Like the EG Feedthrough, Conax Technologies EGT Feedthroughs electrically and/or thermally isolate single electrodes, tubes or temperature sensors for use in vacuum furnaces, liquid level probes, transformers, environmental chambers, power leads and more. These bare electrical feedthroughs also seal against gases and liquids and resist element movements under pressure. The EGT Feedthrough differs from the EG Feedthrough in that the insulator and sealant are provided as a single continuous Teflon™ piece to accommodate higher voltage/amperage at lower pressures.

EGT Feedthrough bodies with NPT threads or SAE threads are constructed from 303 SST standard. Weld neck style feedthroughs are constructed from 316L SST standard. Followers for all styles are constructed from 303 SST standard. Many optional materials are also available. See page 9 for details.

Cap Style A offers a mounting thread only. Cap Style B provides threading on both ends for attachment to conduit or terminal heads. Alternative sealant materials are available. Please consult a Conax Technologies sales engineer for custom needs.

Conductors are available in Copper, Nickel and 303 SST. Use of Nickel rather than Copper is recommended in oxidizing atmospheres. For further information on conductor selection, see page 11. Custom conductors, such as nickel-plated copper, are available. Please consult factory.

- Temperature Range: -300 °F to +450 °F (-185 °C to +232 °C)
- Pressure Range: Vacuum to 2,500 PSIG (170 bar)— see Pressure Ratings in Specification Charts.
- Voltage Rating: to 8000VDC
- Amperage Rating: to 525 amp
- Supplied with or without conductor

Accessories

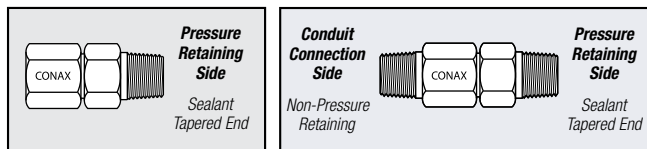
The replaceable sealant permits repeated use of the same fitting. Electrodes can be easily assembled or replaced in the field. To replace the sealant or element, simply loosen the cap, replace the necessary items, relubricate and retorque the cap.

EGTs are supplied factory lubricated. When reused, the EGTs should be relubricated to maintain the published torque and pressure ratings. If EGTs are cleaned prior to assembly, they should be relubricated. On weld mount models, the heat from the welding process will destroy the lubricant. These models must also be relubricated prior to use. See page 109 for information on our lubrication kit.

To order a Replacement Sealant, order RS - (EGT) - (Diameter).

Example: RS-EGT-093

For replacement conductors, see the Accessories section on page 108.

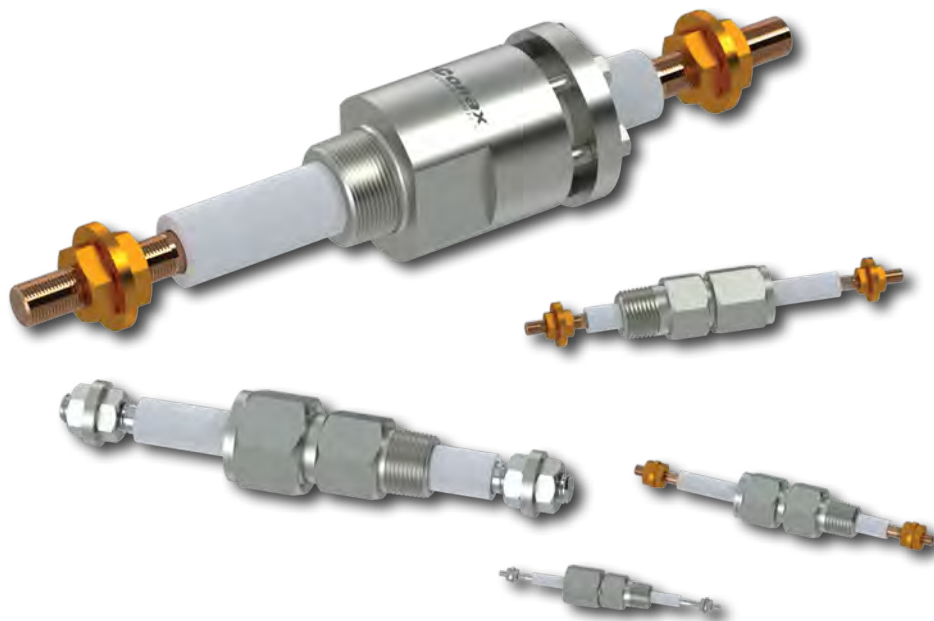
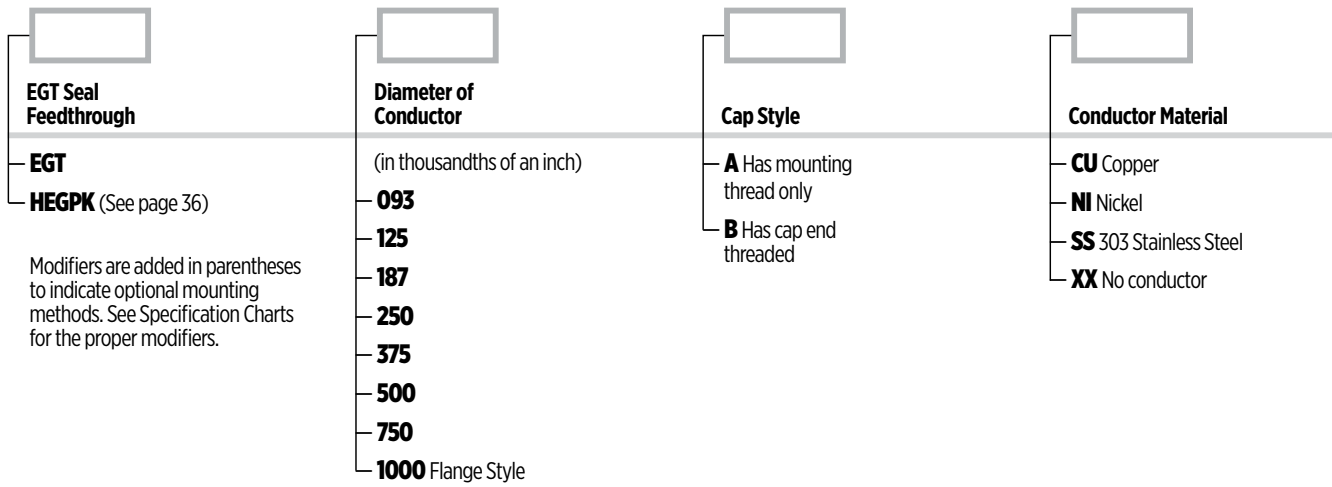


Type A has mounting thread only. Type B has cap end threaded. B Cap NPT matches the standard mounting NPT.

Catalog Numbering System

Example: EGT-093-B-SS

- EGT Seal Feedthrough
- Diameter of Conductor
- Cap Style
- Conductor Material



For High Performance Electrode Fitting with single PEEK™ Insulator (up to 8,000 volts) for pressures up to 7700 PSIG (530 bar). See page 36 for HEGPK.

EGT/HEGPK SERIES

Specifications

EGT Series Single Electrode Sealing—Hex	Conductor				Amperage Rating			Voltage Rating	Length				Hex Size				Pressure Rating	
	Standard		Standard		(@ 30 °C, 90 °C max)				Length A		Length B		Body	Cap	Body	Cap	Teflon™	
	Dia.	Length	Dia.	Length	CU	NI	SS	DC	IN	MM	IN	MM	IN	IN	MM	MM	PSIG	BAR
	IN	IN	MM	MM														
Standard 1/8" NPT																		
EGT-093	0.093	3.2	2.36	81	20	10	3	4,000	1.19	30.2	1.56	39.7	0.500	0.500	12.7	12.7	2,500	172
Weld Neck (Weld Neck Length 0.39", Diameter 0.405")*																		
EGT(SWM1/S316L)-093	0.093	3.2	2.36	81	20	10	3	4,000	1.19	30.2	1.56	39.7	0.500	0.500	12.7	12.7	2,500	172
SAE 1/2-20 Thread Mount (formerly MS)																		
EGT(MSE5/-)-093	0.093	3.2	2.36	81	20	10	3	4,000	1.25	31.8	1.63	41.4	0.750	0.500	19.1	12.7	2,500	172
Standard 1/4" NPT																		
EGT-125	0.120	5.0	3.05	127	40	15	6	8,000	2.00	50.8	2.63	66.7	0.750	0.750	19.1	19.1	1,200	83
Weld Neck (Weld Neck Length 0.59", Diameter 0.54")*																		
EGT(SWM2/S316L)-125	0.120	5.0	3.05	127	40	15	6	8,000	2.00	50.8	2.63	66.7	0.750	0.750	19.1	19.1	1,200	83
SAE 9/16-18 Thread Mount (formerly MS)																		
EGT(MSE6/-)-125	0.120	5.0	3.05	127	40	15	6	8,000	2.00	50.8	2.63	66.7	0.813	0.750	20.7	19.1	1,200	83
Standard 1/2" NPT																		
EGT-187	0.182	6.5	4.62	165	60	25	9	8,000	2.56	65.1	3.31	84.1	1.000	1.000	25.4	25.4	1,600	110
EGT-250	0.245	6.5	6.22	165	95	40	15	8,000	2.56	65.1	3.31	84.1	1.000	1.000	25.4	25.4	1,200	83
Weld Neck (Weld Neck Length 0.78", Diameter 0.84")*																		
EGT(SWM4/S316L)-187	0.182	6.500	4.62	165	60	25	9	8,000	2.56	65.1	3.31	84.1	1.000	1.000	25.4	25.4	1,600	110
EGT(SWM4/S316L)-250	0.245	6.500	6.22	165	95	40	15	8,000	2.56	65.1	3.31	84.1	1.000	1.000	25.4	25.4	1,200	83
SAE 3/4-16 Thread Mount (formerly MS)																		
EGT(MSE8/-)-187	0.182	6.5	4.62	165	60	25	9	8,000	2.56	65.1	3.31	84.1	1.000	1.000	25.4	25.4	1,600	110
EGT(MSE8/-)-250	0.245	6.5	6.22	165	95	40	15	8,000	2.56	65.1	3.31	84.1	1.000	1.000	25.4	25.4	1,200	83
Standard 3/4" NPT																		
EGT-375	0.370	8.5	9.40	216	160	65	24	8,000	2.88	73.0	3.63	92.1	1.250	1.500	31.8	38.1	600	41
EGT-500	0.495	8.5	12.57	216	200	80	30	8,000	2.88	73.0	3.63	92.1	1.250	1.500	31.8	38.1	600	41
Weld Neck (Weld Neck Length 0.79", Diameter 1.05")*																		
EGT(SWM5/S316L)-375	0.370	8.5	9.40	216	160	65	24	8,000	2.88	73.0	3.63	92.1	1.250	1.500	31.8	38.1	600	41
EGT(SWM5/S316L)-500	0.495	8.5	12.57	216	200	80	30	8,000	2.88	73.0	3.63	92.1	1.250	1.500	31.8	38.1	600	41
SAE 1-5/16-12 Thread Mount (formerly MS)																		
EGT(MSE16/-)-375	0.370	8.5	9.53	216	160	65	24	8,000	2.88	73.0	3.63	92.1	1.625	1.500	41.3	38.1	600	41
EGT(MSE16/-)-500	0.495	8.5	12.57	216	200	80	30	8,000	2.88	73.0	3.63	92.1	1.625	1.500	41.3	38.1	600	41
Standard 1" NPT																		
EGT-750	0.745	9.3	18.92	235	400	165	60	8,000	3.50	88.9	4.50	114.3	1.750	2.000	44.5	50.8	600	41
Weld Neck (Weld Neck Length 0.98", Diameter 1.315")*																		
EGT(SWM6/S316L)-750	0.745	9.3	18.92	235	400	165	60	8,000	3.50	88.9	4.50	114.3	1.750	2.000	44.5	50.8	600	41

EGT Series Single Electrode Sealing—Flange	Conductor				Amperage Rating			Voltage Rating	Length				Diameter		Pressure Rating	
	Standard		Standard		(@ 30 °C, 90 °C max)				Length A		Length B		Flange/Body	Teflon™		
	Dia.	Length	Dia.	Length	CU	NI	SS	DC	IN	MM	IN	MM	IN	MM	PSIG	BAR
	IN	IN	MM	MM												
Standard 1-1/4" NPT																
EGT-1000	0.995	10.0	25.27	254	525	240	72	8,000	3.75	95.3	N/A	N/A	3.000	76.2	100	7
Weld Neck (Weld Neck Length 1.01", Diameter 1.66")**																
EGT(SWM7/S316L)-1000	0.995	10.0	25.27	254	525	240	72	8,000	3.75	95.3	N/A	N/A	3.000	76.2	100	7

Note: EGT-750 and EGT-1000 are not available with SAE threads.

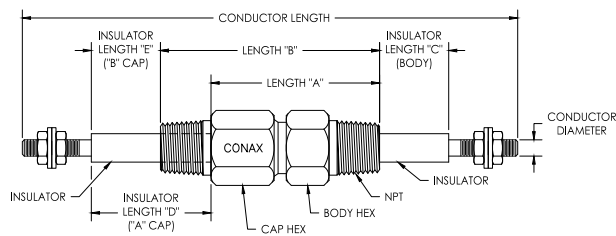
Note: The pressure and torque ratings provided in this catalog apply only when bores are drilled by Conax Technologies. Custom bore sizes and/or a blank body, follower and/or sealant may be provided. Consult factory.

* Weld neck models require lubrication prior to use.

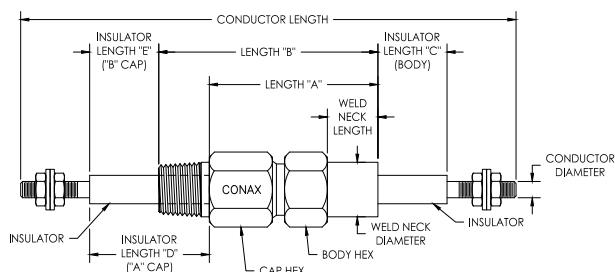
All pressure and torque ratings were determined at 68 °F (20 °C) using stainless steel rod as the element. Pressure ratings may degrade at higher temperatures. Pressure rating guide values are provided for fittings with elements restrained by the compressed sealant. Higher pressure may be attained with additional element restraints. For proper assembly of these seal fittings, see the Assembly Instructions provided on pages 112-126.

EGT Series		Length (inches)		
		C	D	E
Cap Style	Process Connection			
Hex	1/8" NPT & 0.405" Weld Neck	0.19	0.61	0.22
Hex	1/4" NPT & 0.540" Weld Neck	0.52	0.98	0.39
Hex	1/2" NPT & 0.840" Weld Neck	0.72	1.52	0.80
Hex	3/4" NPT & 1.050" Weld Neck	1.09	1.72	0.93
Flange	1" NPT & 1.315" Weld Neck	1.09	1.72	0.93
Flange	1-1/4" NPT & 1.660" Weld Neck	1.09	1.72	0.93
For SAE threads, all sizes – Consult Factory		C/F	C/F	C/F

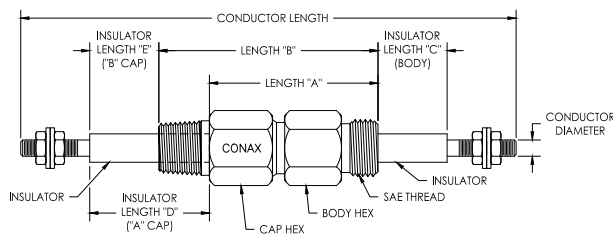
Hex Style



Standard 3/4 NPT

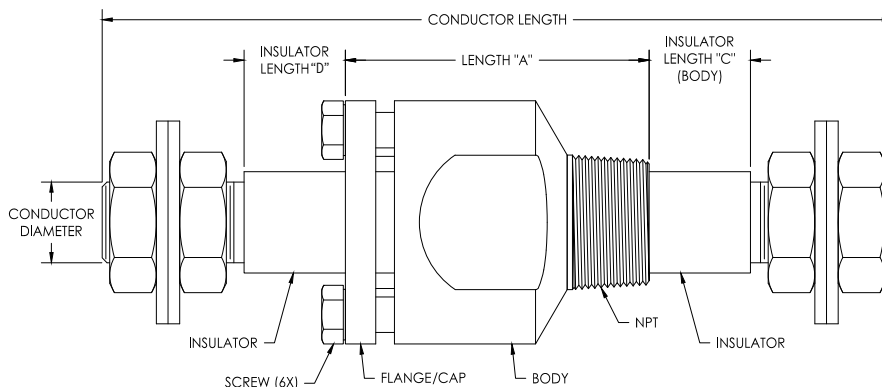


Weld Neck Mount

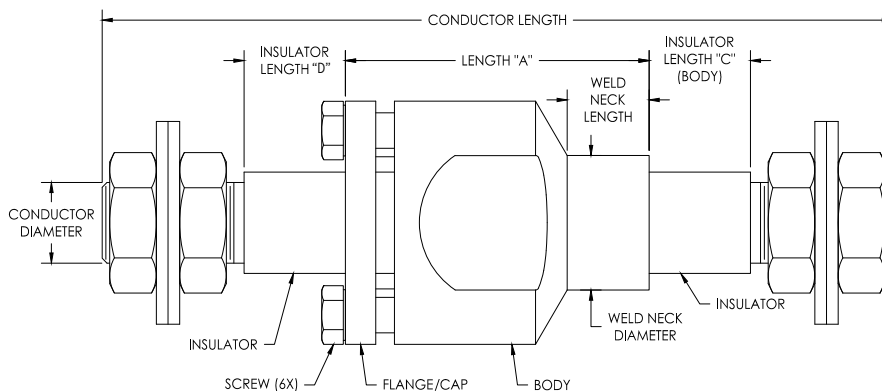


SAE Thread Mount

Flange Style



EGT-1000 NPT



EGT-1000 Weld Neck Mount

